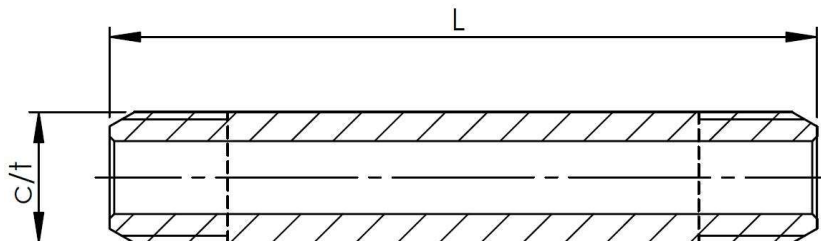


Nipples (90205)

Operating pressure:	1.500 bar/21.500psi
Temperature:	-60°C to +200°C
Material body:	AISI316L
Connections:	Cone and thread



Catalogue number	L [mm]	ct ["]
90205 1/4x60	60	1/4
90205 1/4x63	63	1/4
90205 1/4x76	76	1/4
90205 1/4x102	102	1/4
90205 1/4x152	152	1/4
90205 1/4x160	160	1/4
90205 1/4x203	203	1/4
90205 1/4x254	254	1/4
90205 1/4x305	305	1/4
90205 3/8x63	63	3/8
90205 3/8x76	76	3/8
90205 3/8x102	102	3/8

Catalogue number	L [mm]	ct ["]
90205 3/8x152	152	3/8
90205 3/8x160	160	3/8
90205 3/8x203	203	3/8
90205 3/8x254	254	3/8
90205 3/8x305	305	3/8
90205 9/16x76	76	9/16
90205 9/16x102	102	9/16
90205 9/16x152	152	9/16
90205 9/16x160	160	9/16
90205 9/16x203	203	9/16
90205 9/16x254	254	9/16
90205 9/16x305	305	9/16

Datasheet subject to change without notice

Revision 0